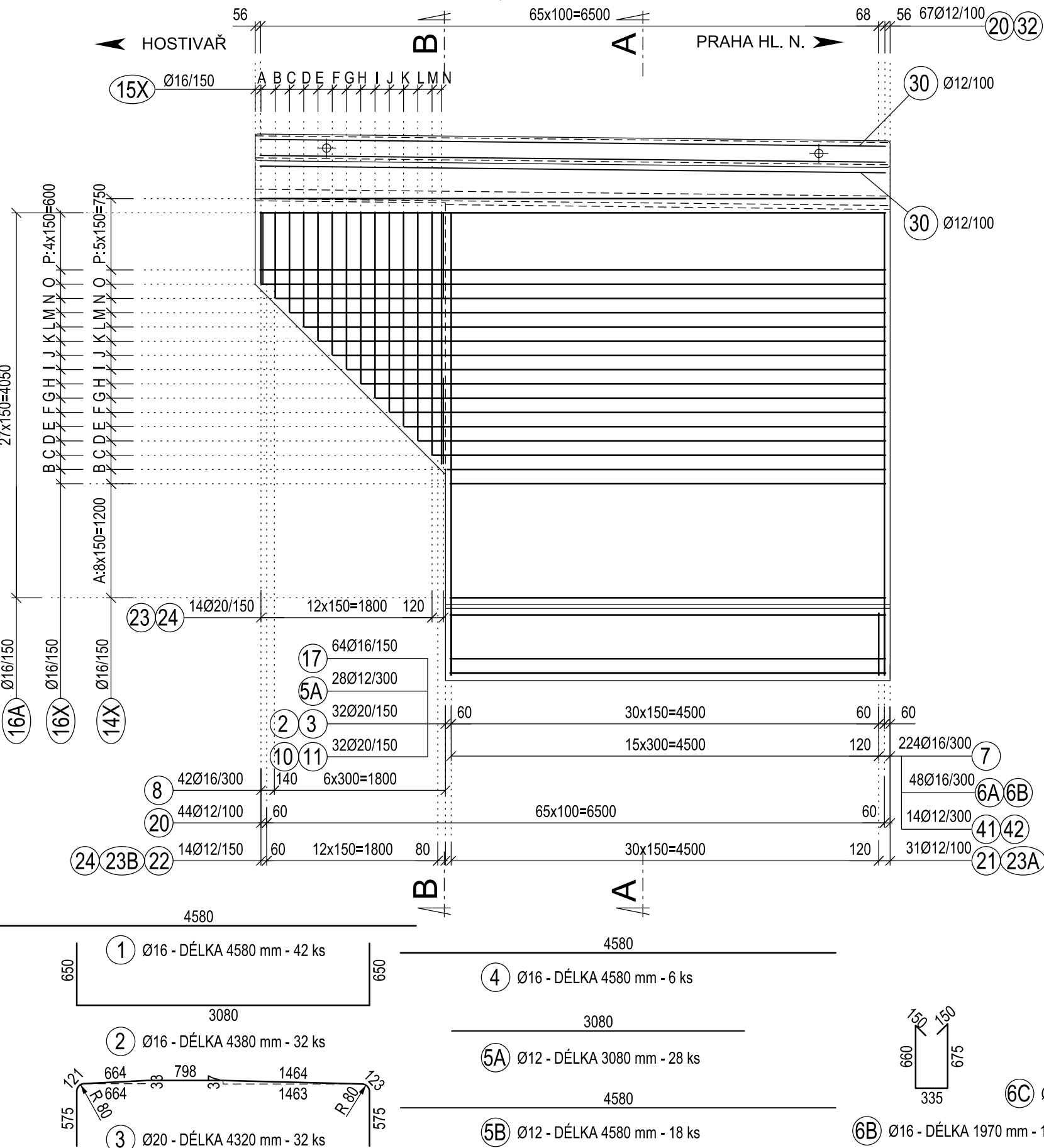
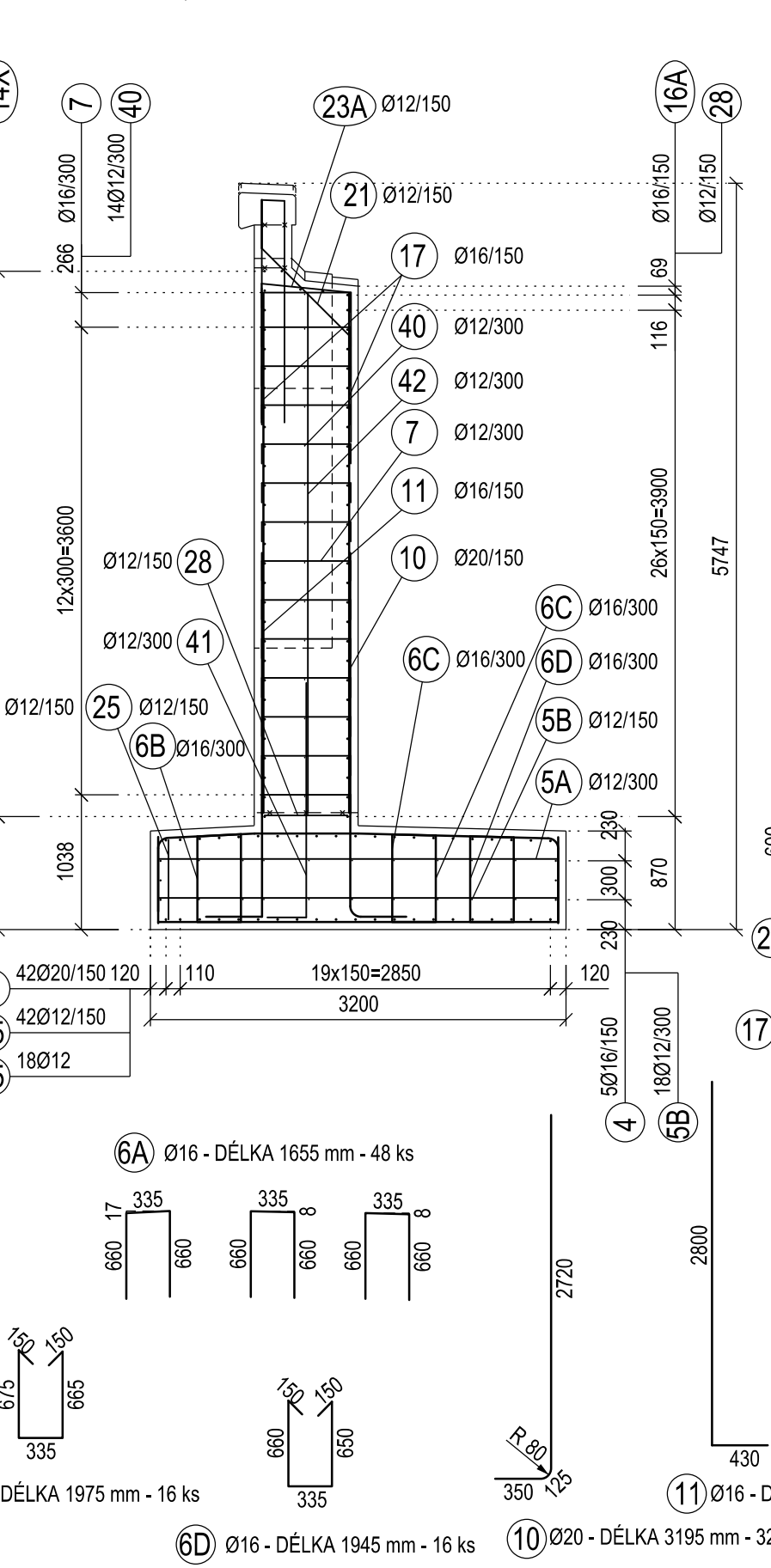


SO 3-20-03 ŽELEZNIČNÍ MOST V EV. KM 8,295
KŘÍDLA -VÝKRES VÝZTUŽE

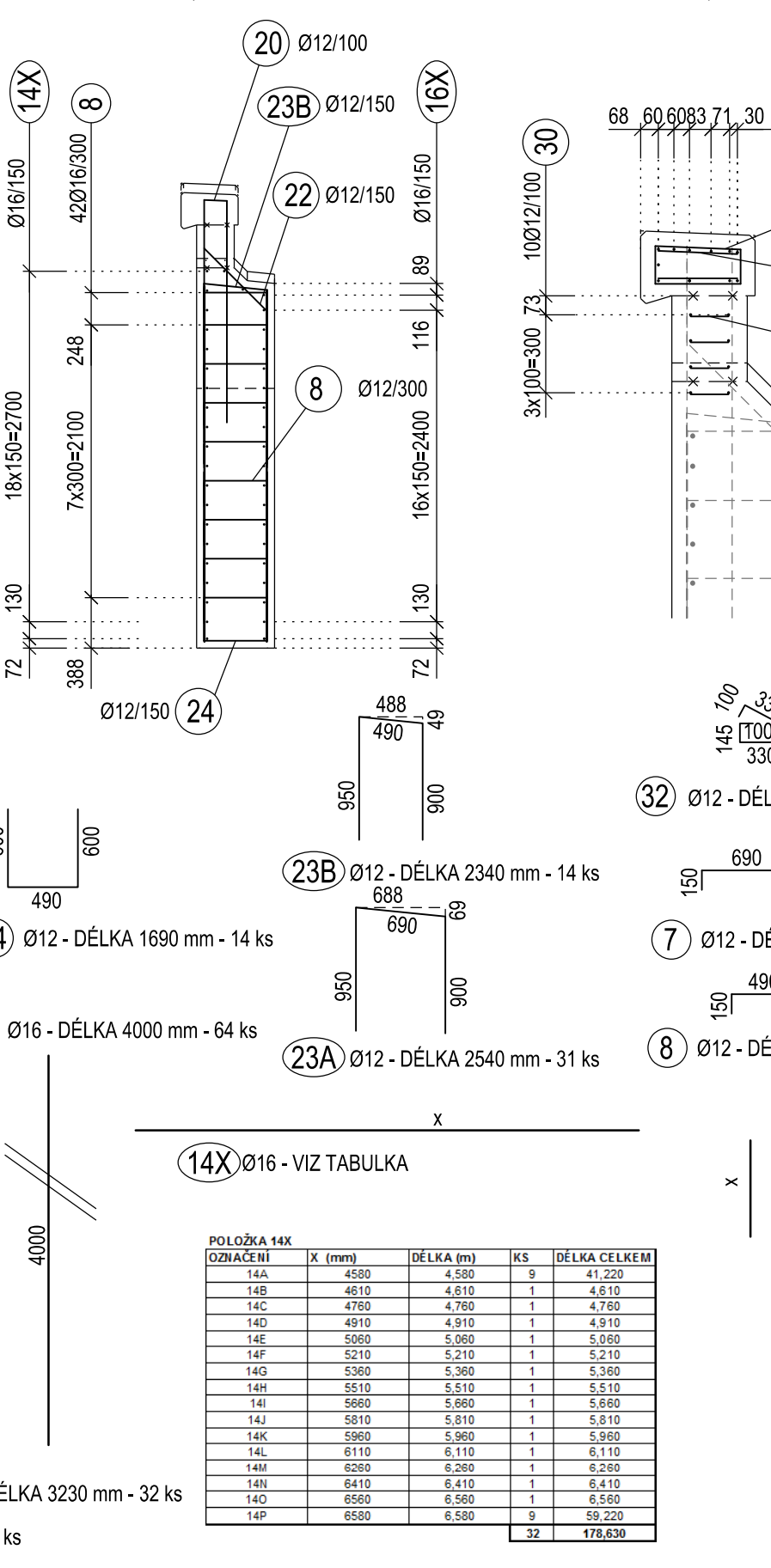
KŘÍDLO K1 - POHLED NA LÍC, M 1:50



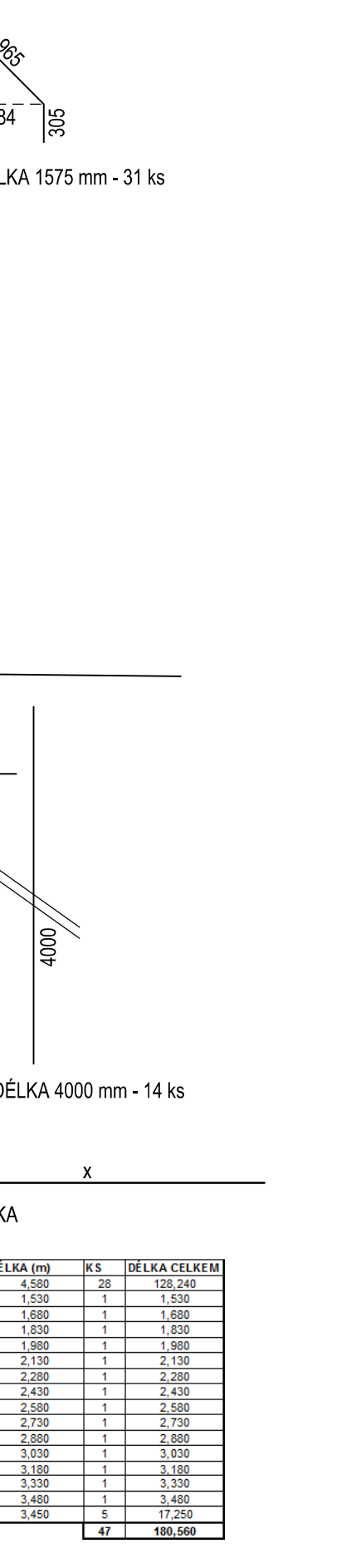
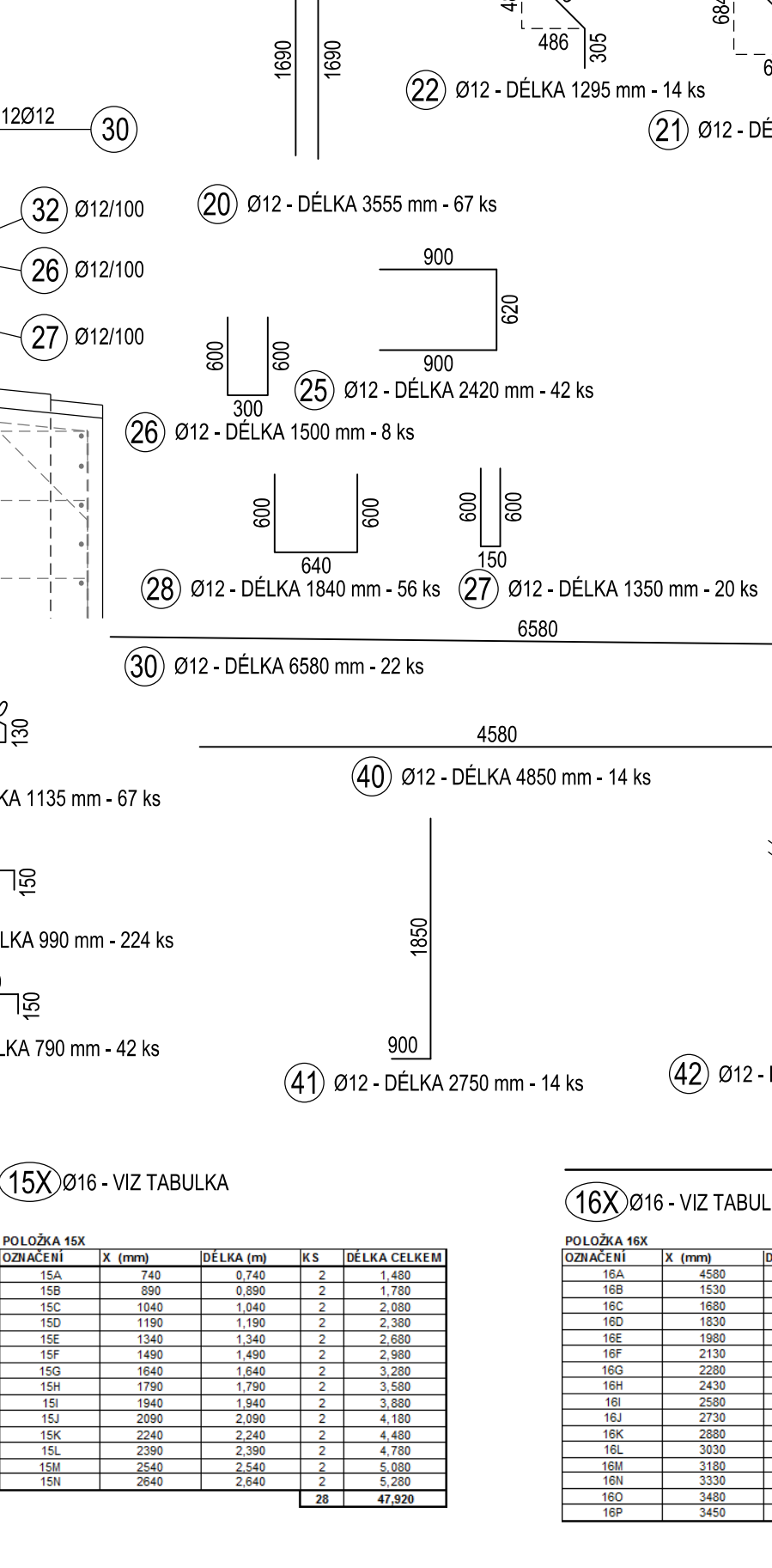
ŘEZ A-A, M 1:50



ŘEZ B-B, M 1:50



ŘÍMSA, M 1:25



POZNÁMKY

1. VŠEOBECNÉ VIZ PŘÍLOHA 1 - TECHNICKÁ ZPRÁVA
2. VÝŠKOVÝ SYSTÉM BpV
3. ROZMĚRY KAPSY PRO OSAZENÍ MOSTNÍHO ZÁVĚRU BUDOU UPRÁVENY DLE SKUTEČNÝCH ROZMĚRŮ MOSTNÍHO ZÁVĚRU
4. NENÍ-LI UVEDENO JINAK, UVAŽUJE SE ZKOSENÍ HRAN 20/20 (MM)
5. DO BEDNĚNÍ JE TŘEBA VLOŽIT BODY PRO MĚŘENÍ ÚČINKŮ BLUDNÝCH PROUDŮ
6. VÝZTUŽ JE VÁZANA NA MÍSTĚ
7. KÓTY VÝZTUŽE JSOU VZTAŽENY K OSÁM JEDNOTLIVÝCH PRUTŮ
8. KRYTÍ VÝZTUŽE : MINIMÁLNÍ KRYTÍ MKB= 40mm
JMENOVITĚ KRYTÍ JKB= 50mm

MATERIÁL

OCEL B500B K1 K2 K3 K4
4,0t 4,0t 3,3t 3,3t

KUBATURA BETONU - CELKEM K1, K2, K3, K4 115,4 m³

KŘÍDLA - 110,3 m³

ŘÍMSY - 5,2 m³

VÝZTUŽ - CELKEM K1, K2, K3, K4 14,5 t

VÝKAZ VÝZTUŽE - K1

Ø	profil	délka	počet	celková délka
1	12	0,580	254	221,78
2	12	0,780	42	33,18
3	20	3,180	32	101,76
4	16	3,230	32	103,36
5	16	1,770	31	48,83
6	16	1,470	31	40,67
7	16	4,000	54	256,00
8	16	1,690	14	23,66
9	16	1,690	14	23,66
10	16	1,690	14	23,66
11	16	1,690	14	23,66
12	16	1,690	14	23,66
13	16	1,690	14	23,66
14	16	1,690	14	23,66
15	16	1,690	14	23,66
16	16	1,690	14	23,66
17	16	1,690	14	23,66
18	16	1,690	14	23,66
19	16	1,690	14	23,66
20	16	1,690	14	23,66
21	16	1,690	14	23,66
22	16	1,690	14	23,66
23	16	1,690	14	23,66
24	16	1,690	14	23,66
25	16	1,690	14	23,66
26	16	1,690	14	23,66
27	16	1,690	14	23,66
28	16	1,690	14	23,66
29	16	1,690	14	23,66
30	16	1,690	14	23,66
31	16	1,690	14	23,66
32	16	1,690	14	23,66
33	16	1,690	14	23,66
34	16	1,690	14	23,66
35	16	1,690	14	23,66
36	16	1,690	14	23,66
37	16	1,690	14	23,66
38	16	1,690	14	23,66
39	16	1,690	14	23,66
40	16	1,690	14	23,66
41	16	1,690	14	23,66
42	16	1,690	14	23,66
43	16	1,690	14	23,66
44	16	1,690	14	23,66
45	16	1,690	14	23,66
46	16	1,690	14	23,66
47	16	1,690	14	23,66
48	16	1,690	14	23,66
49	16	1,690	14	23,66
50	16	1,690	14	23,66
51	16	1,690	14	23,66
52	16	1,690	14	23,66
53	16	1,690	14	23,66
54	16	1,690	14	23,66
55	16	1,690	14	23,66
56	16	1,690	14	23,66
57	16	1,690	14	23,66
58	16	1,690	14	23,66
59	16	1,690	14	23,66
60	16	1,690	14	23,66
61	16	1,690	14	23,66
62	16	1,690	14	23,66
63	16	1,690	14	23,66
64	16	1,690	14	23,66
65	16	1,690	14	23,66
66	16	1,690	14	23,66
67	16	1,690	14	23,66
68	16	1,690	14	23,66
69	16	1,690	14	23,66
70	16	1,690	14	23,66
71	16	1,690	14	23,66
72	16	1,690	14	23,66
73	16	1,690	14	23,66
74	16	1,690	14	23,66
75	16	1,690	14	23,66
76	16	1,690	14	23,66
77	16	1,690	14	23,66
78	16	1,690	14	23,66
79	16	1,690	14	23,66
80	16	1,690	14	23,66
81	16	1,690	14	23,66
82	16	1,690	14	23,66
83	16	1,690	14	23,66
84	16	1,690	14	23,66
85	16	1,690	14	23,66
86	16	1,690	14	23,66
87	16	1,690	14	23,66
88	16	1,690	14	23,66
89	16	1,690	14	23,66
90	16	1,690	14	23,66
91	16	1,690	14	23,66
92	16	1,690	14	23,66
93	16	1,690	14	23,66
94	16	1,690	14	23,66
95	16	1,690	14	23,66
96	16	1,690	14	23,66
97	16	1,690	14	23,66
98	16	1,690	14	23,66
99	16	1,690	14	23,66
100	16	1,690	14	23,66
101	16	1,690	14	23,66
102	16	1,690	14	23,66
103	16	1,690	14	23,66
104	16	1,690	14	23,66
105	16	1,690	14	23,66
106	16	1,690	14	23,66
107	16	1,690	14	23,66
108	16	1,690	14	23,66
109	16	1,690	14	23,66
110	16	1,690	14	23,66
111	16	1,690	14	23,66
112	16	1,690	14	23,66
113	16	1,690	14	23,66
114	16	1,690	14	23,66
115	16	1,690	14	23,66
116	16	1,690	14	23,66
117	16	1,690	14	23,66
118	16	1,690	14	23,66
119	16	1,690	14	23,66
120	16	1,690	14	23,66
121	16	1,690	14	23,66
122	16	1,690	14	23,66
123	16	1,690	14	23,66
124	16	1,690	14	23,66
125	16	1,690	14	23,66
126	16	1,690	14	23,66
127	16	1,690	14	23,66
128	16	1,690	14	23,66
129	16	1,690	14	23,66
130	16	1,690	14	23,66
131	16	1,690	14	23,66
132	16	1,690	14	23,66
133	16	1,690	14	23,66
134	16	1,690	14	23,66
135	16	1,690	14	23,66
136	16	1,690	14	23,66
137	16	1,690	14	23,66
138	16	1,690	14	23,66
139	16	1,690	14	23,66
140	16	1,690	14	23,66
141	16	1,690	14	23,66
142	16	1,690	14	23,66
143	16	1,690	14	23,66
144	16	1,690	14	23,66
145	16	1,690	14	23,66
146	16	1,690	14	23,66
147	16	1,690	14	23,66
148	16	1,690	14	23,66
149	16	1,690	14	23,66
150	16	1,690	14	23,66
151	16	1,690	14	23,66
152	16	1,690	14	23,66
153	16	1,690	14	23,66
154	16	1,690	14	23,66
155	16	1,690	14	23,66
156	16	1,690	14	23,66
157	16	1,690	14	23,66
158	16	1,690	14	23,66
159	16	1,690	14	23,66
160	16	1,690	14	23,66
161	16	1,690	14	23,66
162	16	1,690	14	23,66
163	16	1,690	14	23,66
164	16	1,690	14	23,66
165	16	1,690	14	23,66
166	16	1,690	14	23,66
167	16	1,690	14	23,66
168	16	1,690	14	23,66
169	16	1,690	14	23,66
170	16	1,690	14	23,66
171	16	1,690	14	23,66
172	16	1,690	14	23,66
173	16	1,690	14	23,66
174	16	1,690	14	23,66
175	16	1,690	14	23,66
176	16	1,690	14	23,66
177	16	1,690	14	23,66
178	16	1,690	14	23,66
179	16	1,690	14	23,66
180	16	1,690	14	23,66
181	16	1,690	14	23,66
182	16	1,690	14	23,66
183	16	1,690	14	23,66
184	16	1,690	14	23,66
185	16	1,690	14	23,66
186	16	1,690	14	23,66
187	16	1,690	14	23,66
188	16	1,690	14	23,66
189	16	1,690	14	23,66
190	16	1,690	14	23,66
191	16	1,690	14	23,66
192	16	1,690	14	23,66
193	16	1,690	14	23,66
194	16	1,690	14	23,66
195	16	1,690	14	23,66
196	16	1,690	14	23,66
197	16	1,690	14	23,66
198	16	1,690	14	23,66
199	16	1,690	14	23,66
200	16	1,690	14	23,66
201	16	1,690	14	23,66
202	16	1,690	14	23,66
203	16	1,690	14	23,66
204	16	1,690	14	23,66
205	16	1,690	14	23,66
206	16	1,690	14	23,66
207	16	1,690	14	23,66
208	16	1,690	14	23,66
209	16	1,690	14	23,66
210	16	1,690	14	23,66
211	16	1,690	14	23,66
212	16	1,690	14	23,66
213	16	1,690	14	23,66
214	16	1,690	14	23,66
215	16	1,690	14	23,66
216	16	1,690	14	23,66
217	16	1,690	14	23,66
218	16	1,690	14	23,66
219	16	1,690	14	23,66
220	16	1,690	14	23,66
221	16	1,690	14	23,66
222	16	1,690	14	23,66
223	16	1,690	14	23,66
224	16	1,690	14	23,66
225	16	1,690	14	23,66
226	16	1,690	14	23,66
227	16	1,690	14	23,66
228	16	1,690	14	23,66
229	16	1,690	14	23,66
230	16	1,690	14	23,66
231	16	1,690	14	23,66
232	16	1,690	14	23,66
233	16	1,690	14	23,66
234	16	1,690	14	23,66
235	16	1,690	14	23,66
236	16	1,690	14	23,66
237	16	1,690	14	23,66
238	16	1,690	14	23,66
239	16	1,690	14	23,66
240	16	1,690	14	23,66
241	16	1,690	14	23,66
242	16	1,690	14	23,66
243	16	1,690	14	23,66
244	16	1,690	14	23,66
245	16	1,690	14	23,66
246	16	1,690	14	23,66
247	16	1,690	14	23,66
248	16	1,690	14	23,66
249	16	1,690	14	23,66
250	16	1,690	14	23,66
251	16	1,690	14	23,66
252	16	1,690	14	23,66
253	16	1,690	14	23,66
254	16	1,690	14	23,66
255	16	1,690	14	23,66
256	16	1,690	14	23,66
257	16	1,690	14	23,66
258	16	1,690	14	23,66
259	16	1,690	14	23,66
260	16	1,690	14	23,66
261	16	1,690	14	23,66
262	16	1,690	14	23,66
263	16	1,690	14	23,66
264	16	1,690	14	23,66
265	16	1,690	14	23,66
266	16	1,690	14	23,66
267	16	1,690	14	23,66
268	16	1,690	14	23,66
269	16	1,690	14	23,66
270	16	1,690	14	23,66
271	16	1,690		