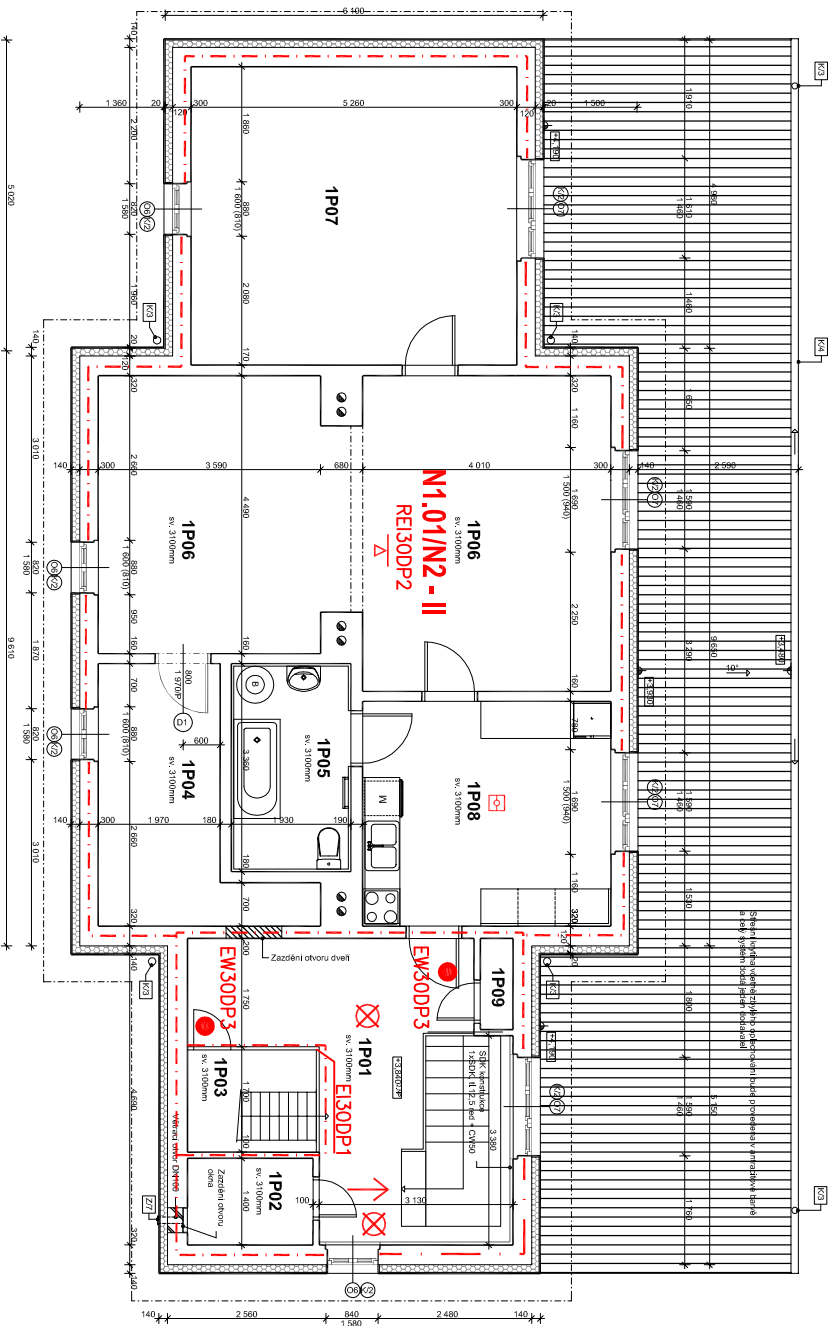






# Püdürys 2.NP



### Legenda místnosti

Club	Local resident	Prior to 1971	Post 1971	Since 1971
1971	Orlando	13.90 m	PVC	Vigorous onitis
1972	Korona	2.8 m	PVC	Vigorous onitis
1973	Scandinavia	3.45 m	Different sodalite	Vigorous onitis
1974	Pasaj	9.9 m	PVC	Vigorous onitis
1975	Coronilla	3.8 m	Kentucky sodite	Vigorous onitis
1976	Pasaj	38.0 m	Different sodalite	Vigorous onitis
1977	Pasaj	23.5 m	Different sodalite	Vigorous onitis
1978	Harvard	17.45 m	PVC	Vigorous onitis
1979	Sublime korona	0.0 m	Different sodalite	Vigorous onitis

### Legenda materiálů

- |   |  |
|---|--|
|  | Konstrukce stěny/k1                                |
|  | CP20 na MV/15                                      |
|  | Mírační tepelná izolace tl.120mm                   |
|  | Zazdívané konstrukce - pórobeton, vápnka, tl.300mm |

## Skladba vnějšího pláště

[illegible]

## Skladba střešní krytiny



PICT\_3.tif