
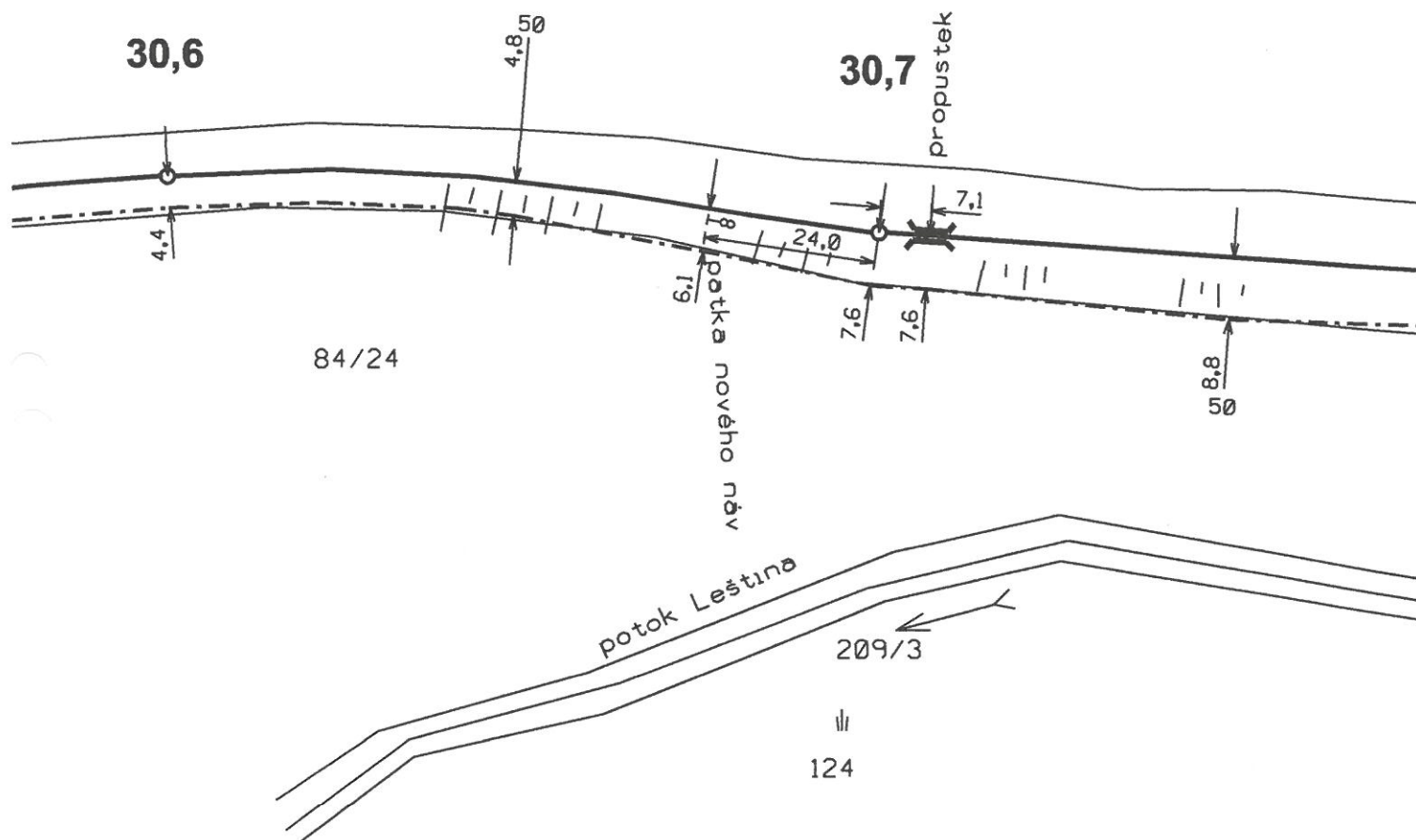
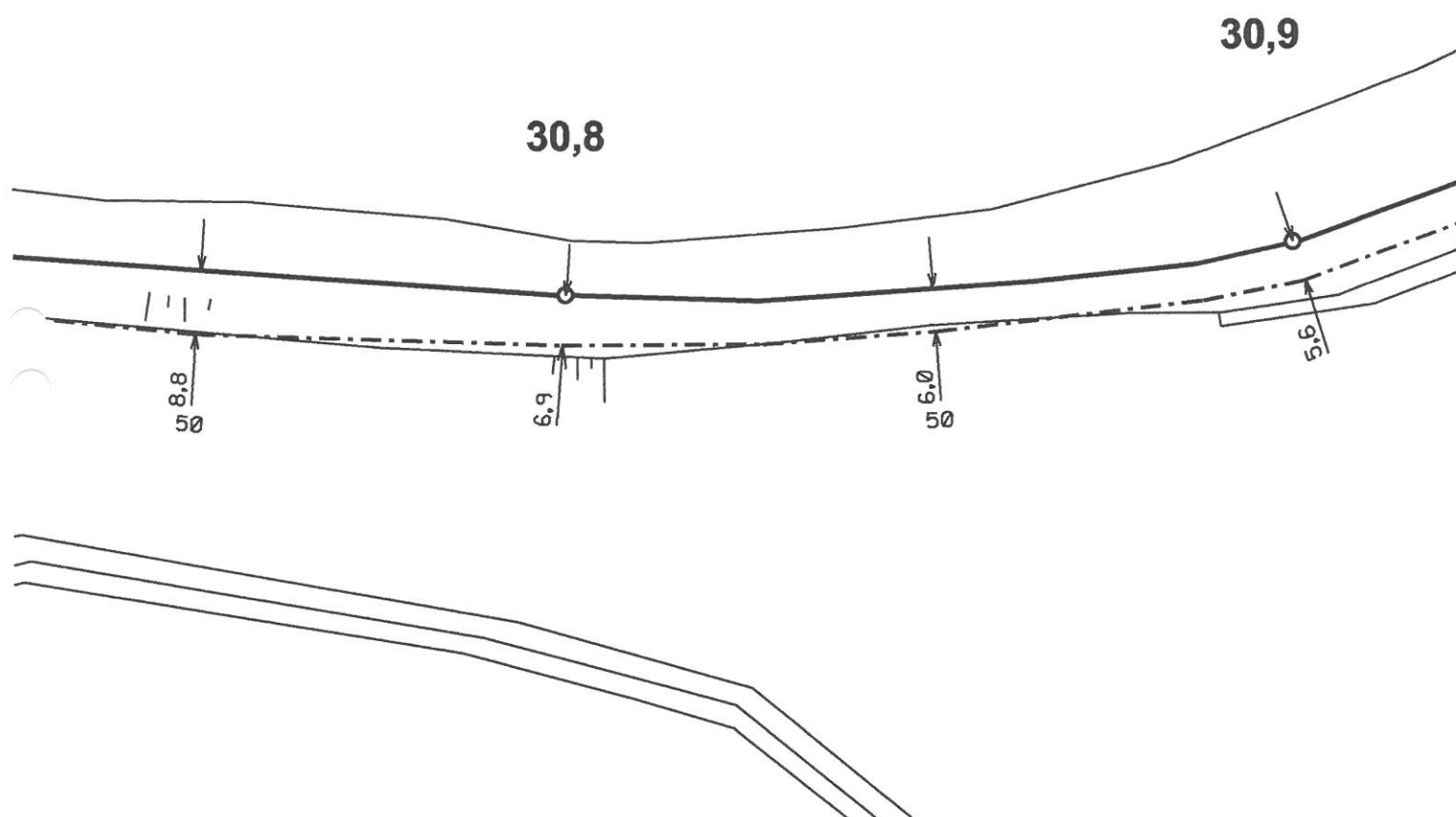

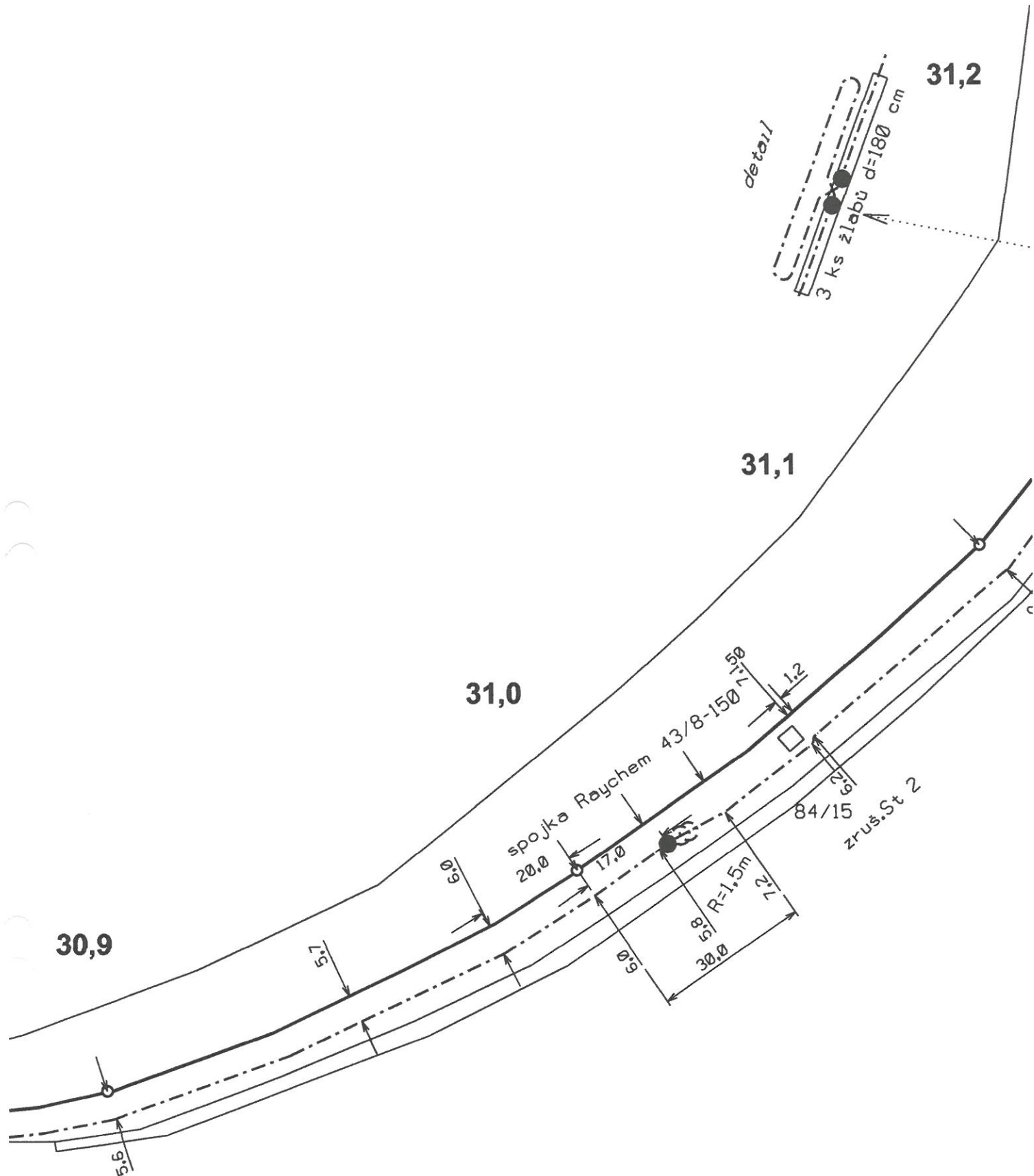
 ČD-Telematika	Porucha č.								Velelíby - Jičín (úsek Bartoušov)
	Oprava č.								
	Plati od	2.11. 2010							km 30,5-30,6 Měřítko 1:1000


 ČD-Telematika 5XN0,8	Porucha č.								Veleluby - Jičín (úsek Bartoušov)
	Oprava č.								
	Platí od	2.11. 2010							km 30,6-30,750 Měřítko 1:1000

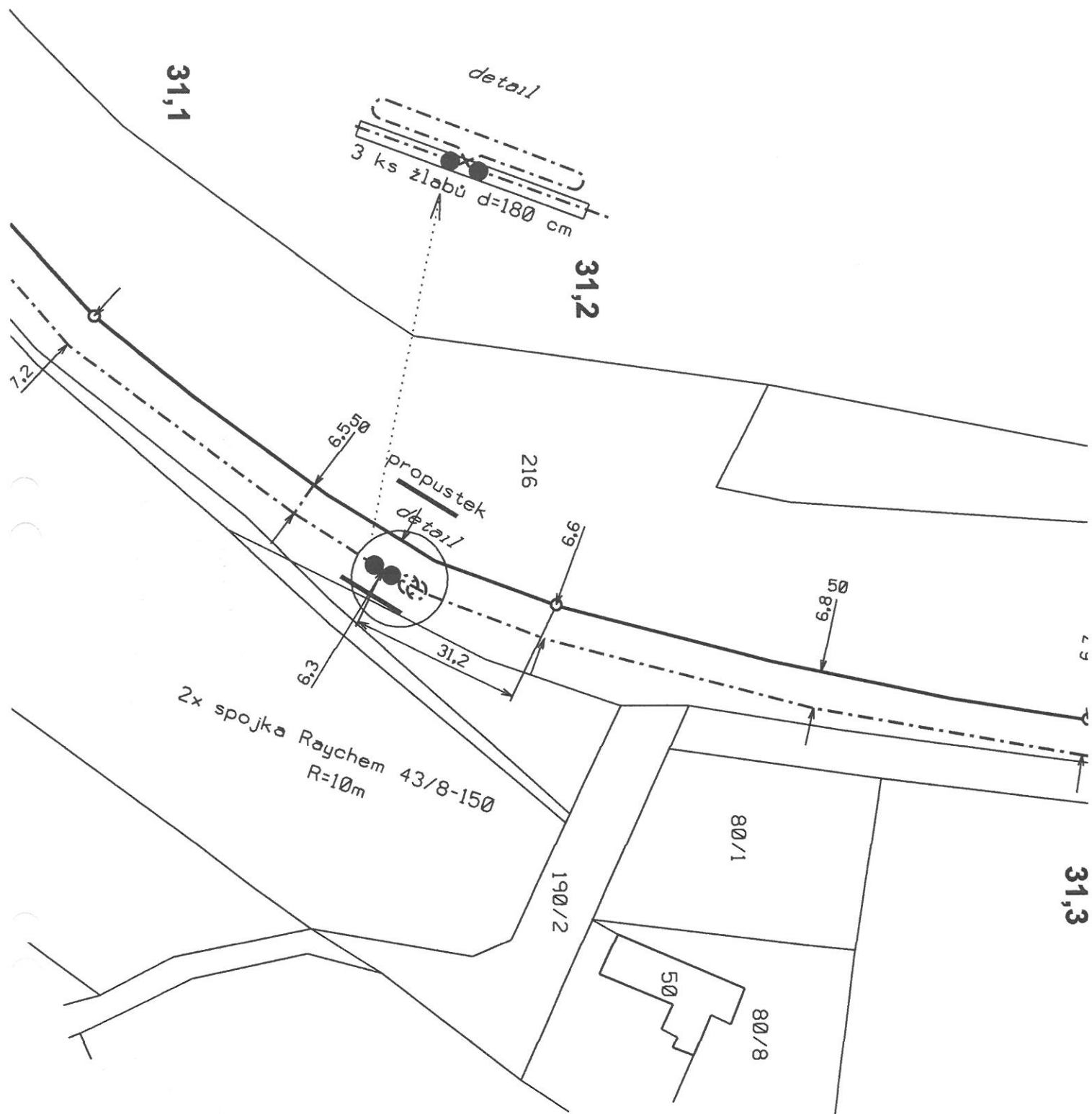


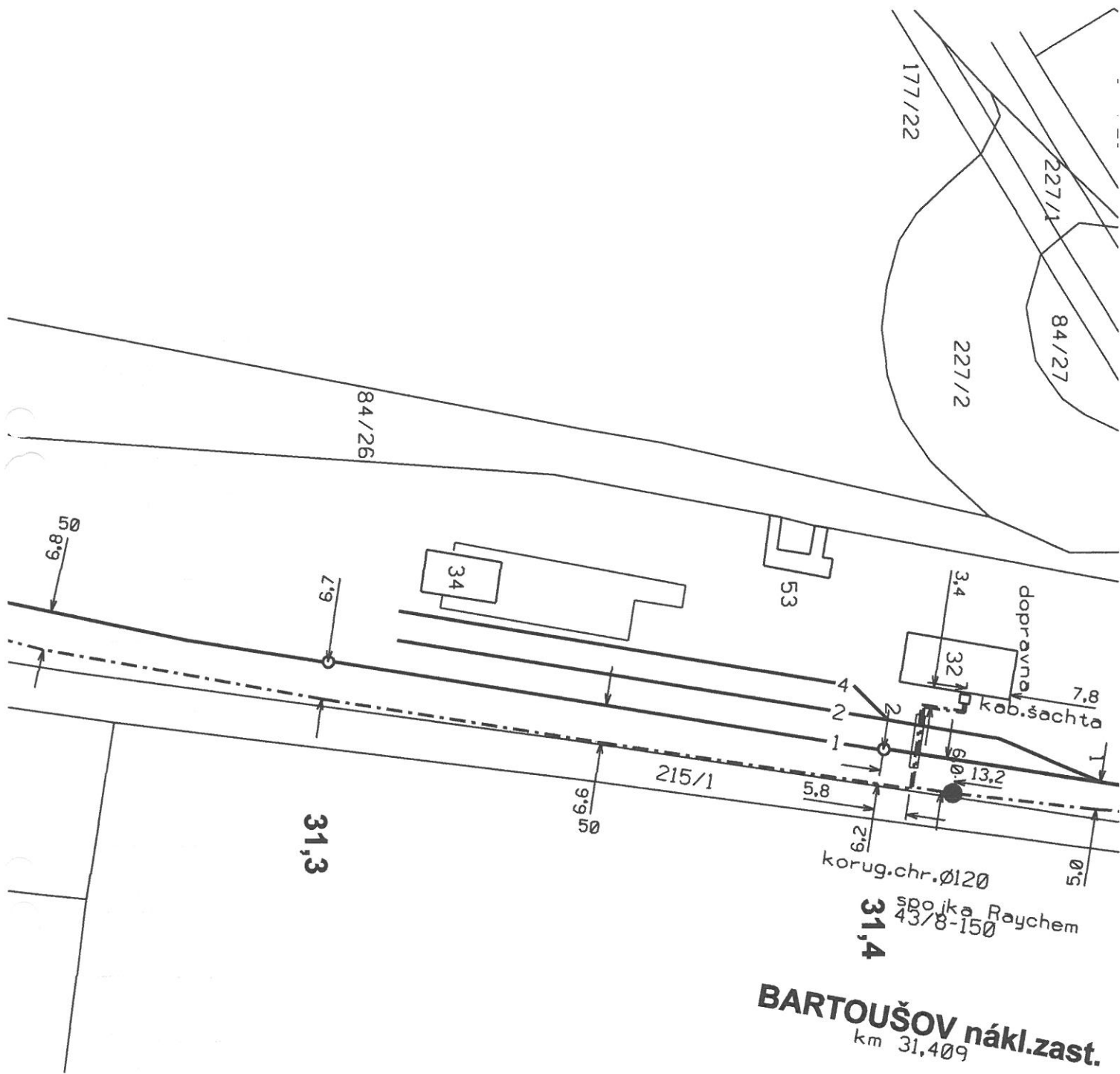


 <b>5XN0,8</b>	Porucha č.								Velelíby - Jičín (úsek Bartoušov)
	Oprava č.								
	Platí od	2.11. 2010							km 30,750-30,9 Měřítko 1:1000



 ČD-Telematika	Porucha č.								Veleřiby - Jičín (úsek Bartoušov)
	Oprava č.								km 30,9-31,1
	Platí od	2.11. 2010							Měřítko 1:1000









318

L2



31,8

5,0

5,7

31,838

31,9

6,0

6,0

50

32,0

4,80

L 3

32,0

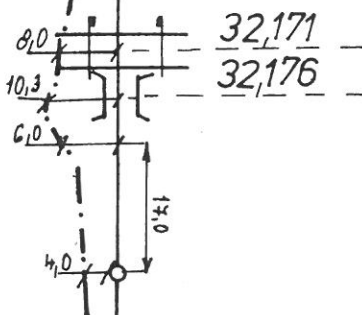
32,1

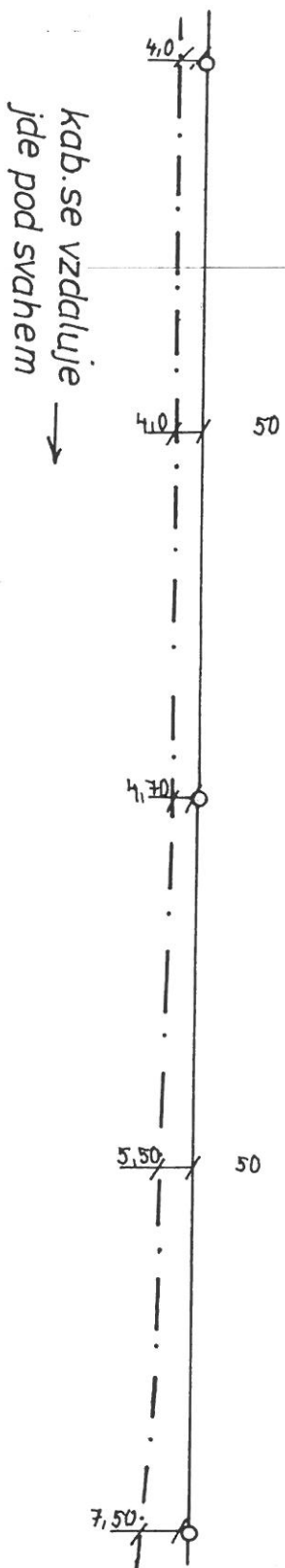
32,2

4,8

5,0 50

5,3





32,2

32,3

32,4

						15

32,4

7,5

8,0 50

32,5

6,7

5,7  
4,2  
3,5  
3,8 50

2,6  
3,2  
5,5

32,538  
PřL

32,6

4,6

L 6

32.8

32,7

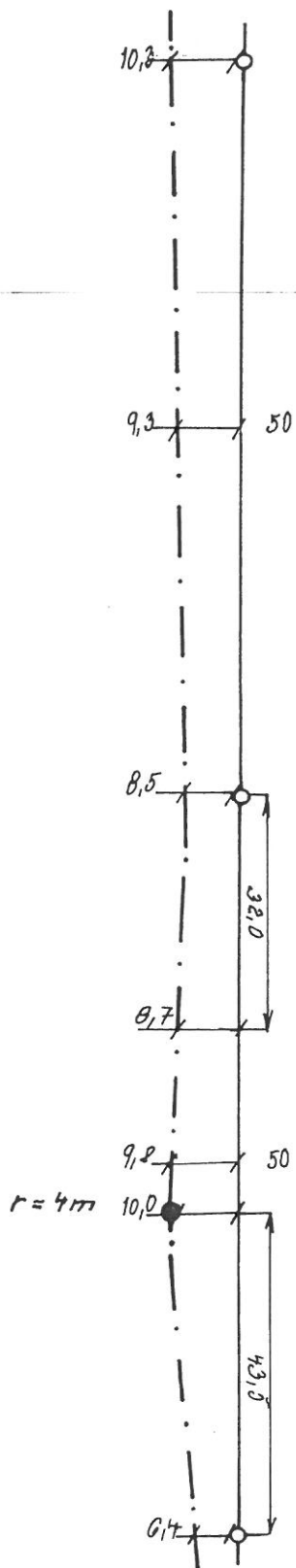


						L7

32,8

32,9

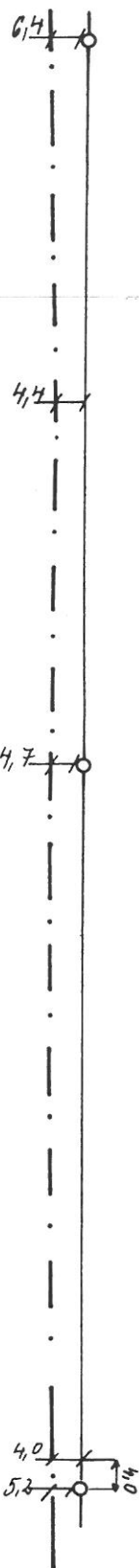
33,0



zastávka JIČÍNĚVES



31,180 —



33,0

33,1

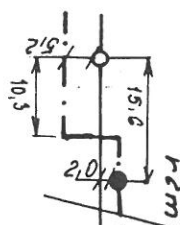
33,2

					6 9

33,2

33,3

33,4



33,223

RD 7

3,5

25,0

33,280

3,0

4,5

50

3,20

3,20

L 10

5 x N 9,8



33,4

33,5

33,6

3,20

50 3,20

3,70

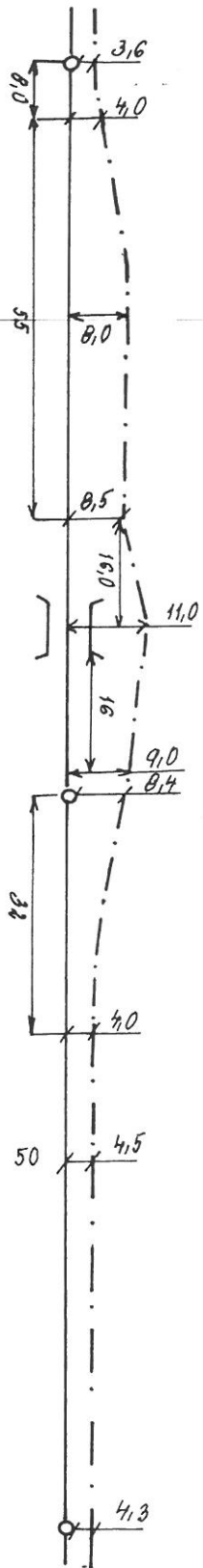
3,60

L 17

33,6

33,7

33,8

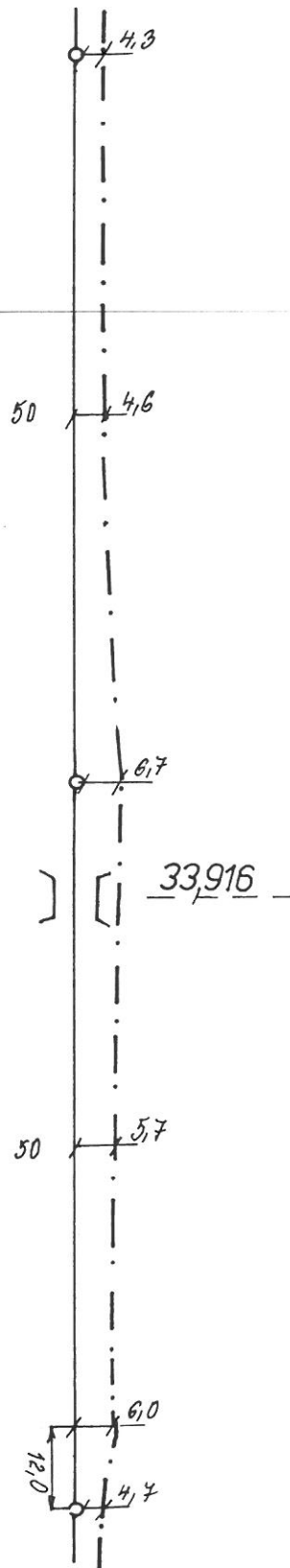


						L12

33,8

33,9

34,0

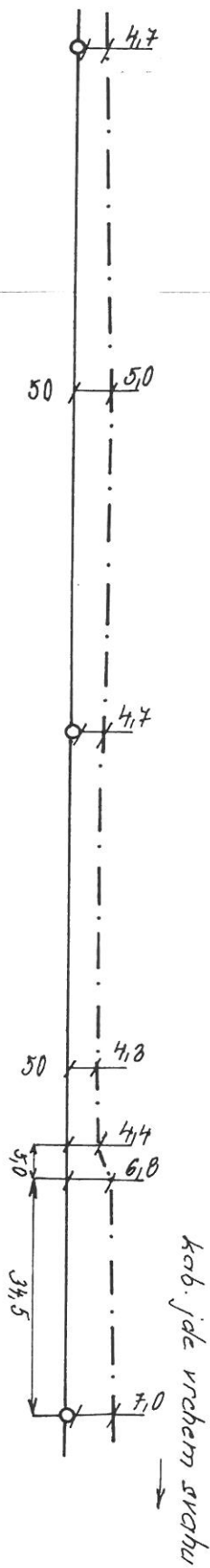


						L 13

34,0

34,1

34,2

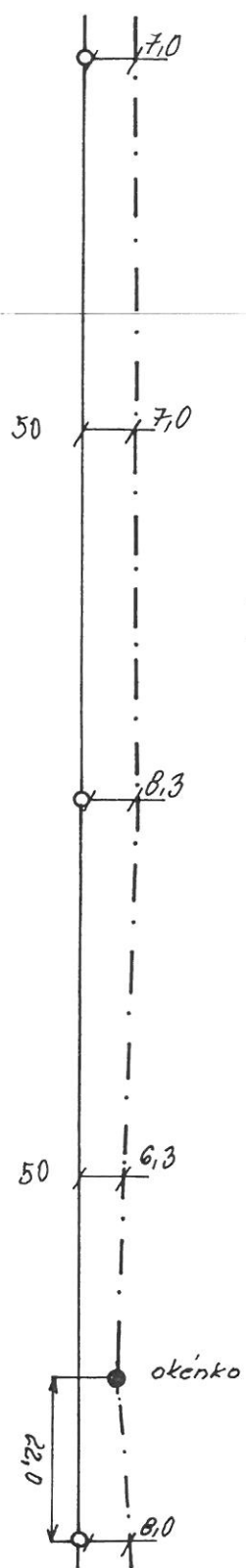


						L 14

34.2

34,3

34,4

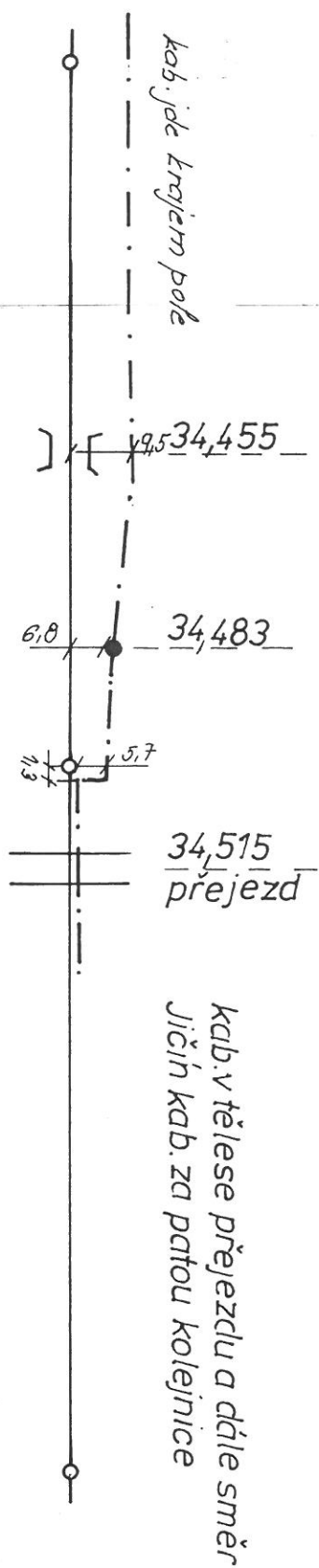


						L15

34,4

34,5

34,6



					trať Veleliby–Jičín	L 16
					úsek Bartoušov km 31,409	
					— km	