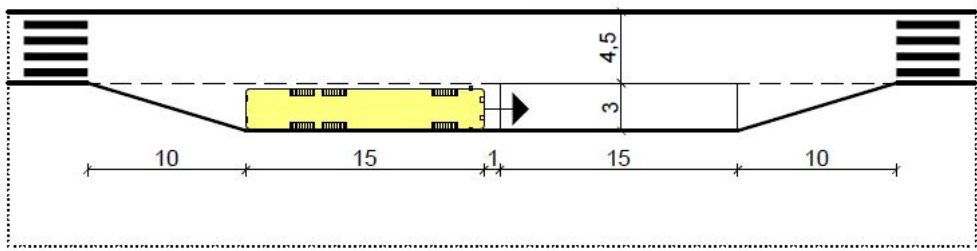


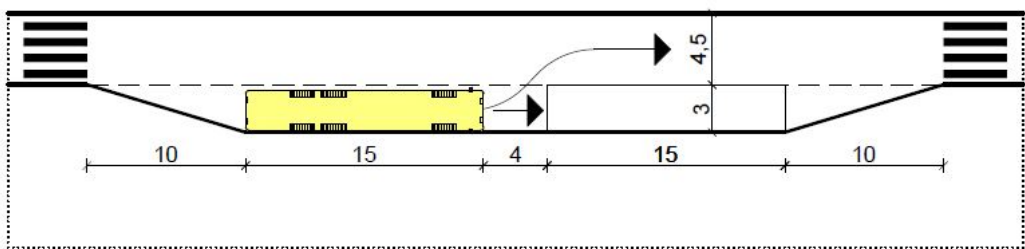
**P26 – BUS STANDS SCHEME**

types 1 and 2 are not allowed;

TYPE 1

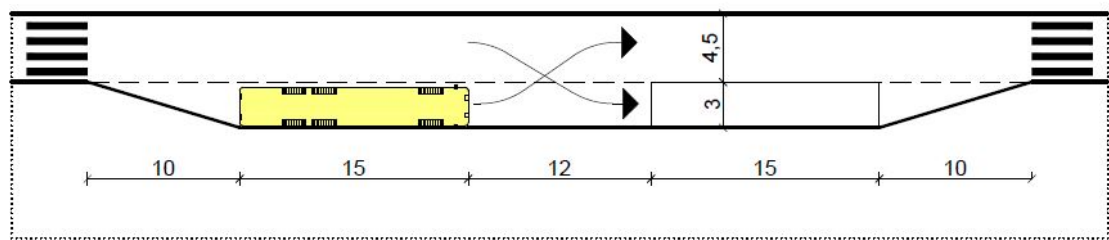


TYPE 2

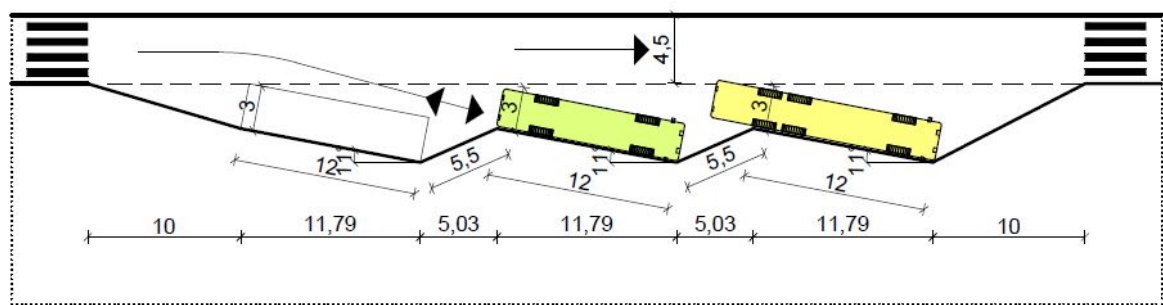


types 3, 4, 5, 6, 7, 8 and 9 are allowed;

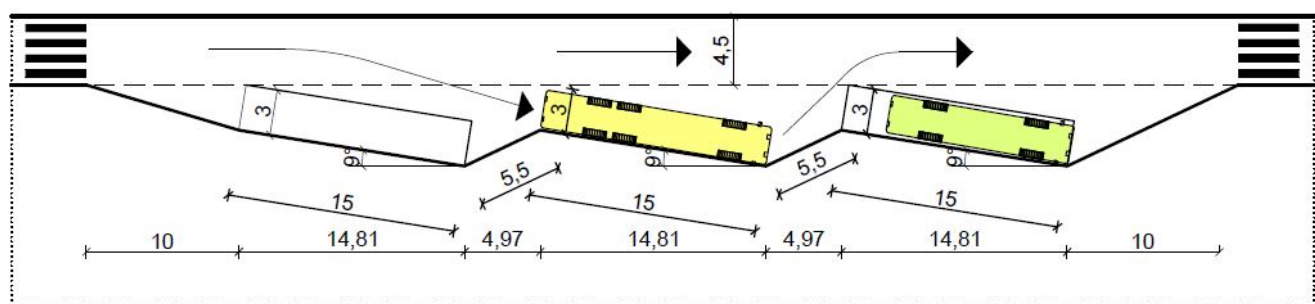
TYPE 3



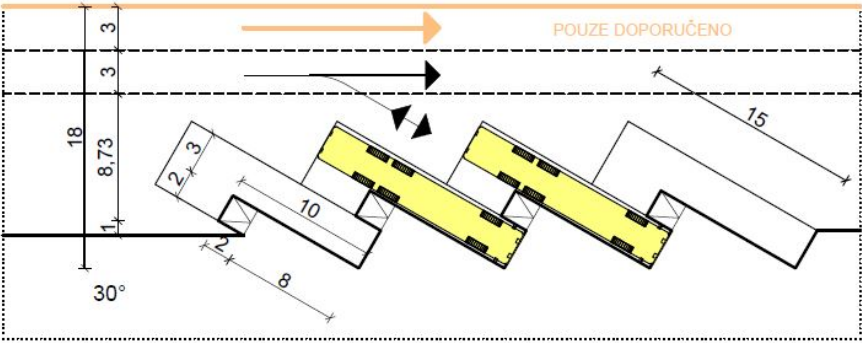
TYPE 4



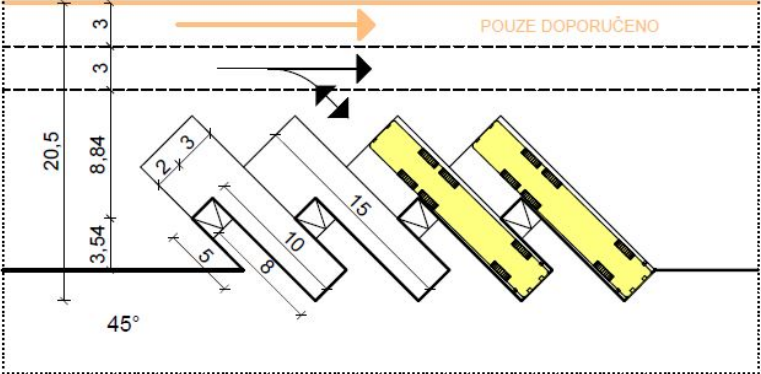
TYPE 5



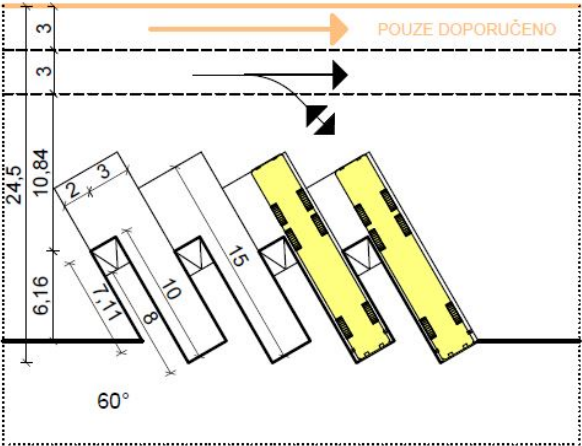
TYPE 6



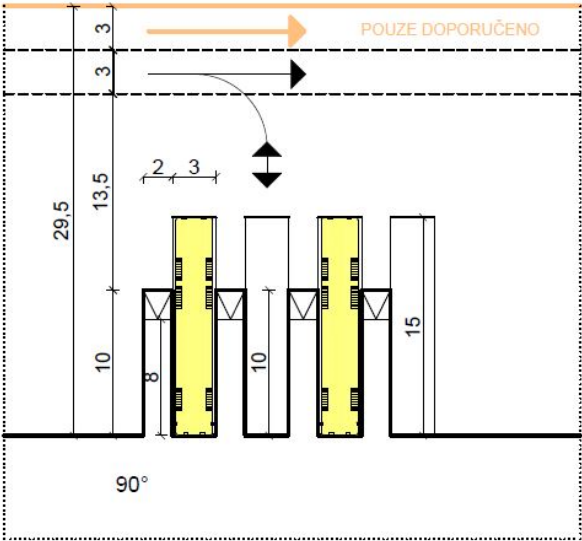
TYPE 7



TYPE 8

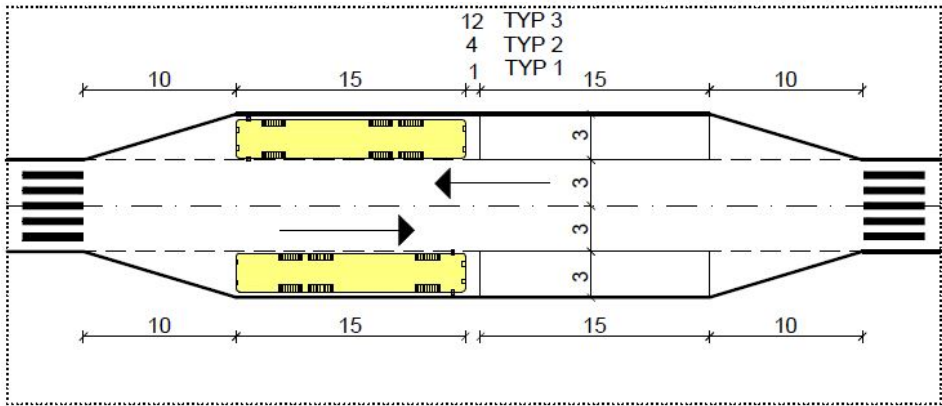


TYPE 9

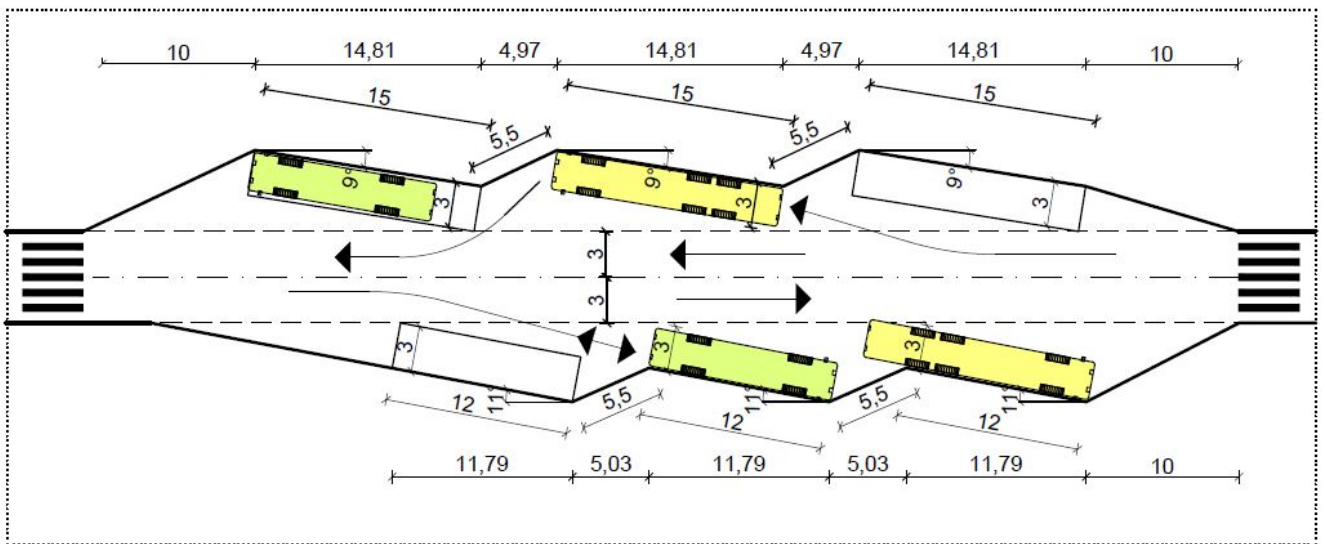


On the picture 10 and 11 are specified dimensions for two-way passage of buses, approaching the bus in the opposite direction, eg. when leaving the station or when turning is allowed on less congested sections,

PICTURE 10



PICTURE 11



Picture 12 shows the smallest distance of obstacle (for example standing bus) from crossing to ensure view between driver and pedestrian. Reversing the bus into crossing is not allowed.

PICTURE 12

