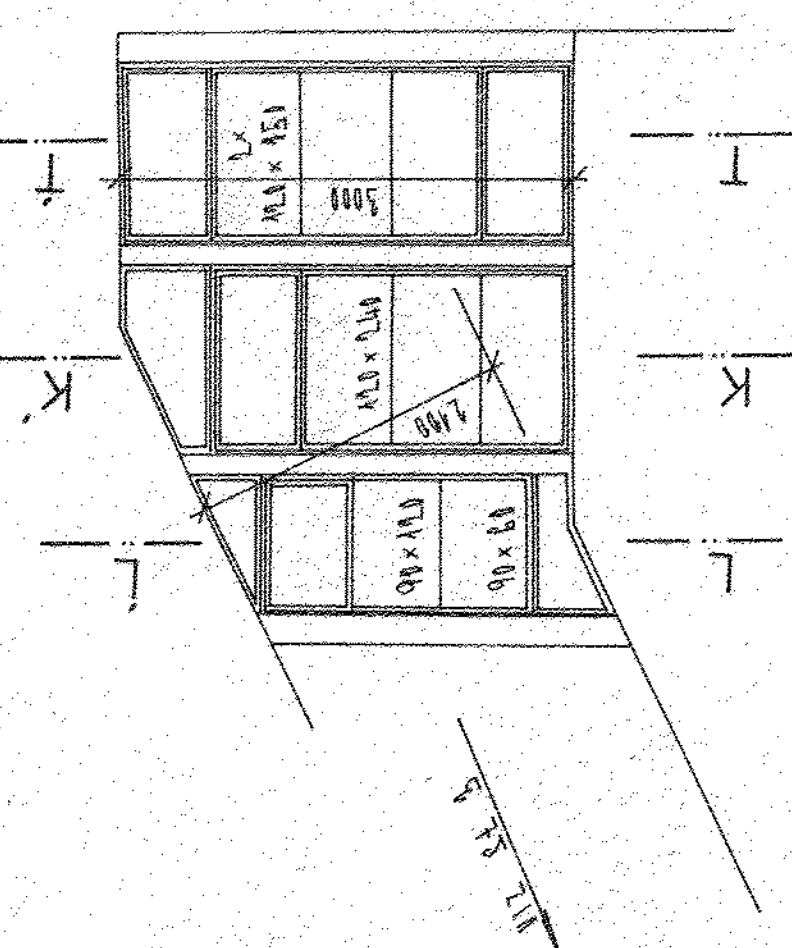
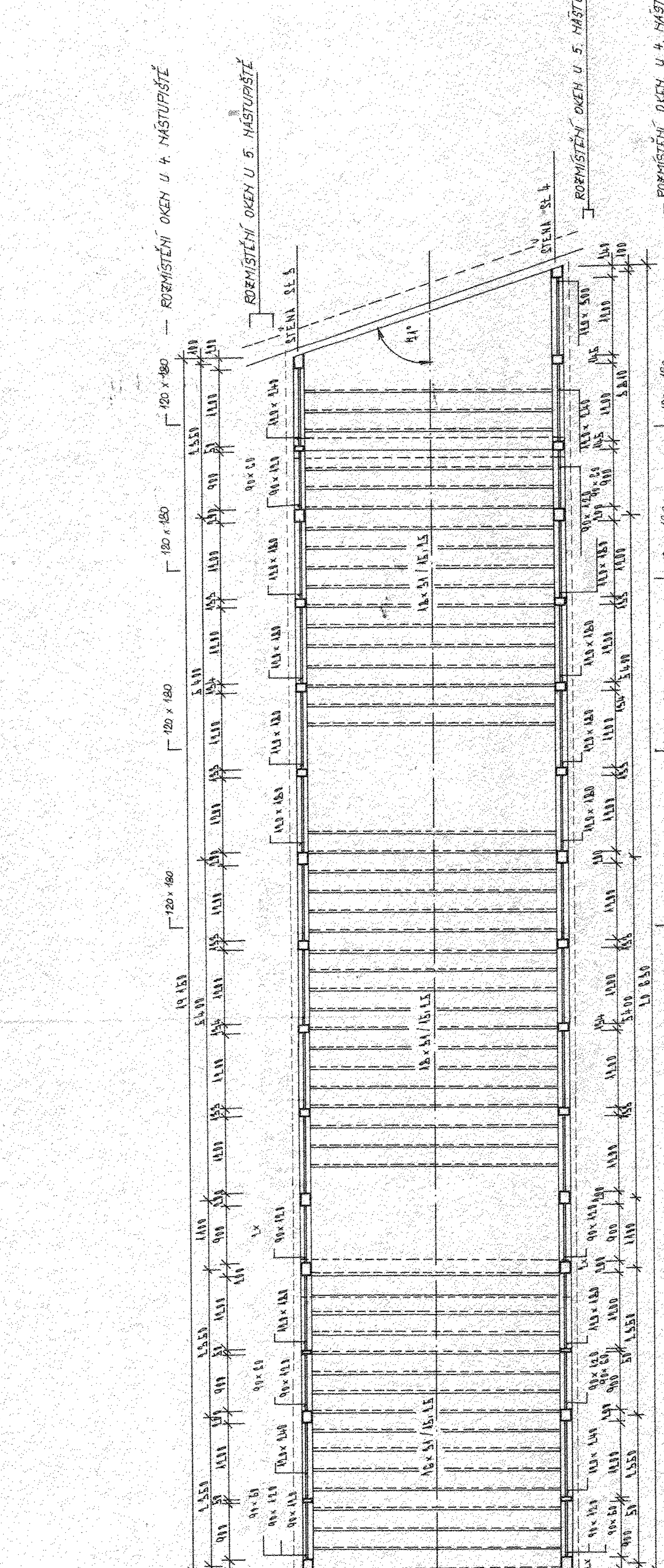
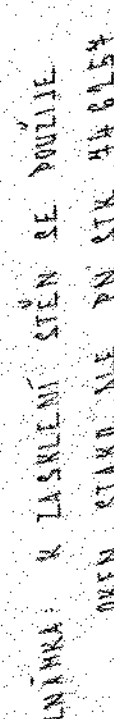
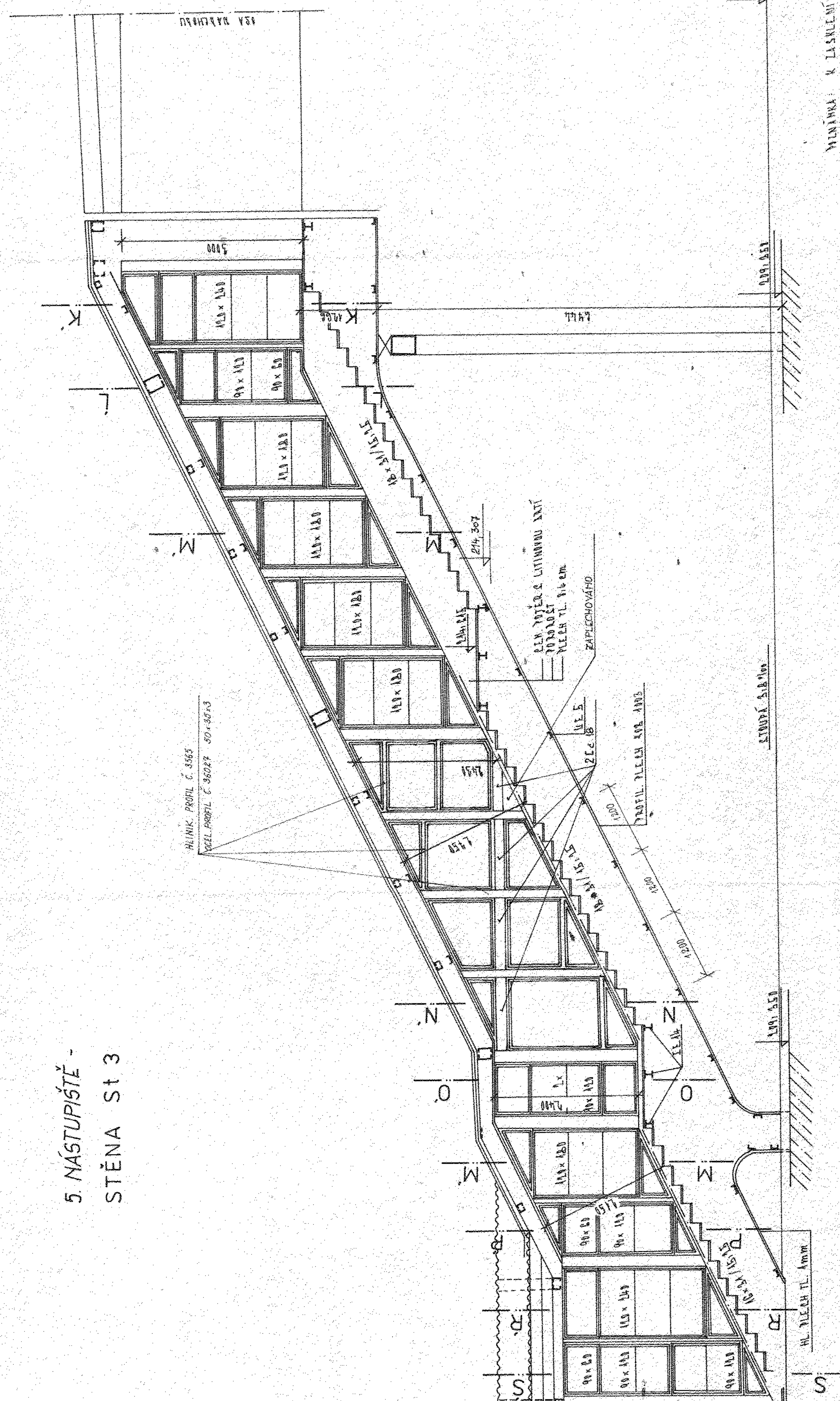


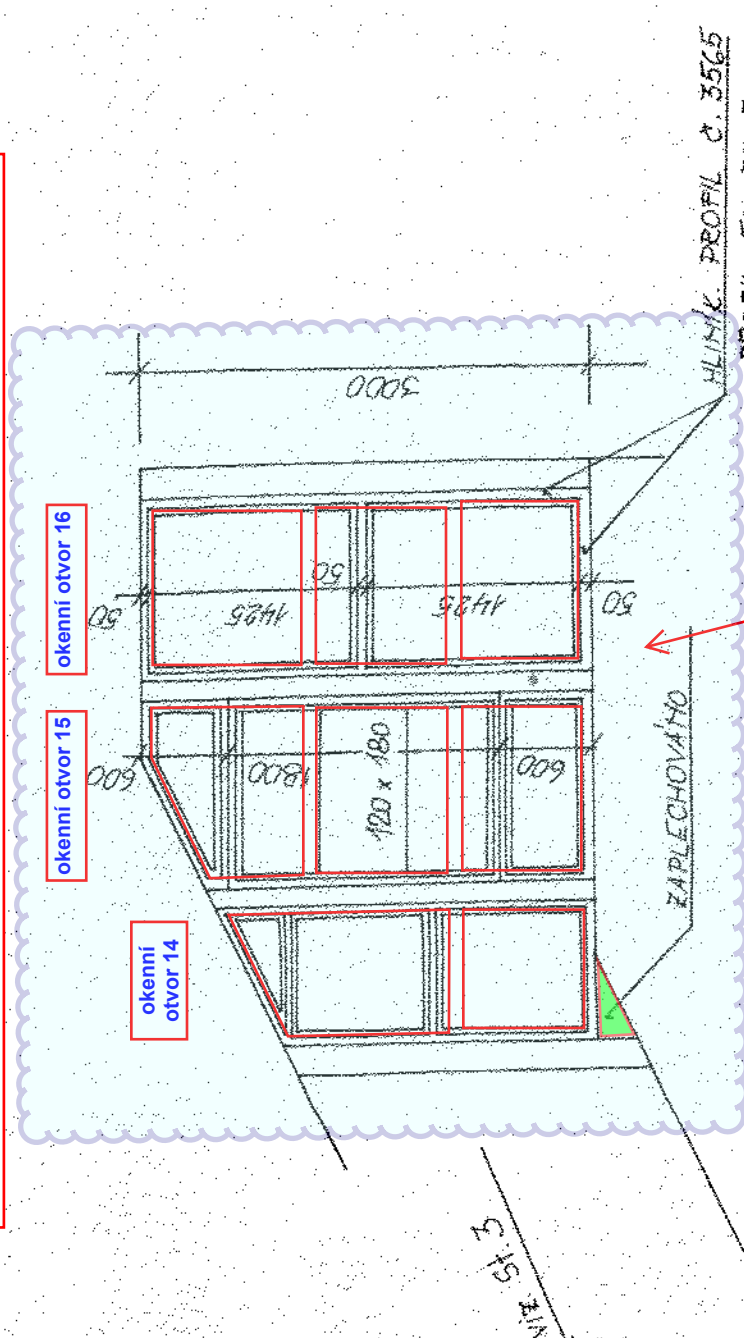
5. NÁSTUPIŠTĚ - STĚNA St 4



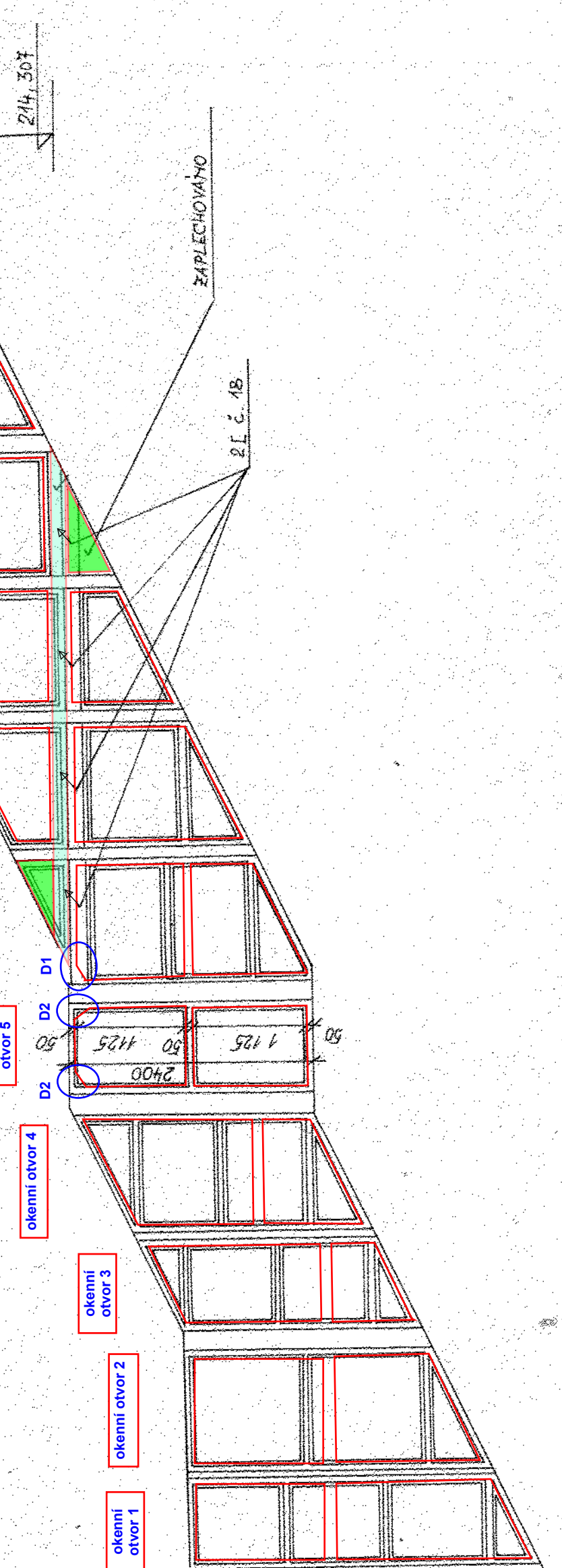
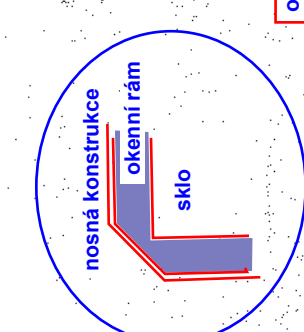
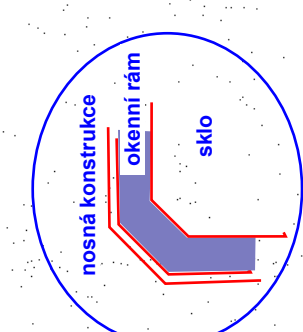
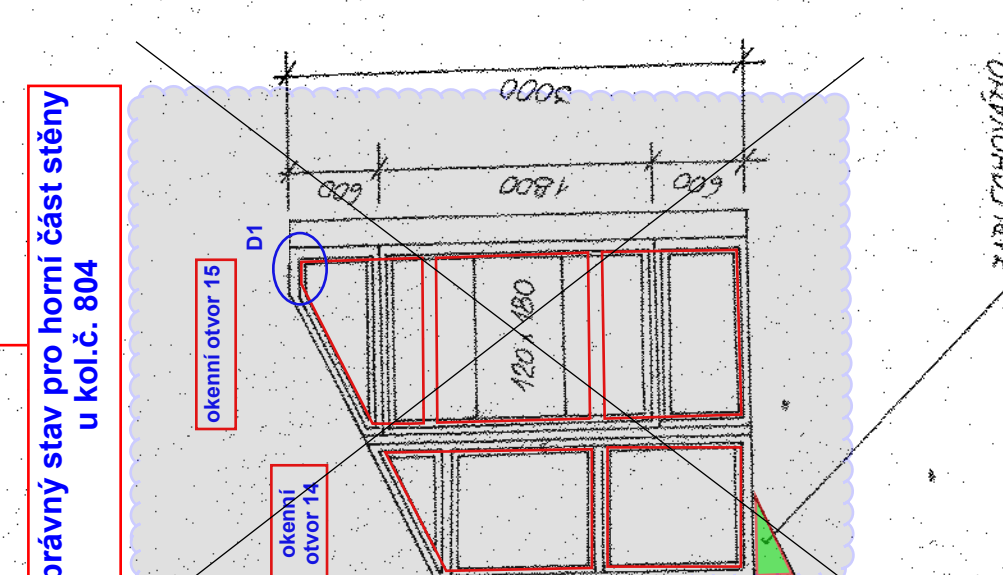
NÁSTUPIŠTĚ -  
STĚNA St 3



**/ . nástupiště, schodiště směr Ostrava Svinov  
- stěna u kol.č. 804**



V. nástupišťě, schodišťě směr Ostrava Svinov -



## ТҮҮС МЭТЭР

PRO UPRAVENOU ČÁST

MATERIAL	m / s	kg / m	VAHA CELLEM
PROFIL 50 x 35 x 3	377.6	3.72	1404.70
PROFIL c. 35x5	944.0	0.66	623.10
SEEST. STREUB M4 10	524.0	-	1.67
PROFIL C 6. 18	98.4	22.0	844.80

**CSD - Stadt drafel**  
KONTAKT SAISON  
**Sommerferien 2008**  
Schüler (Mitarbeiter)  
772 68

CSO - Social Change / 1/1

Technical Director:   
 Date: 

[illegible]

STRAVA HL.N-FRYDLANTSKÉ NÁSTUPIŠTĚ  
BJ3280-NADCHOD NA 4.a 5. NÁSTUPIŠTĚ

ZASKLENI SCHODIST BEZ SVETLOSTEN 1,70m	LAST 100K
--	-----------