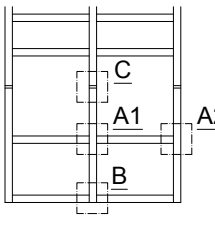
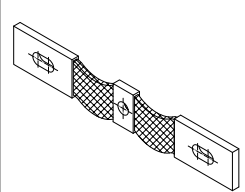





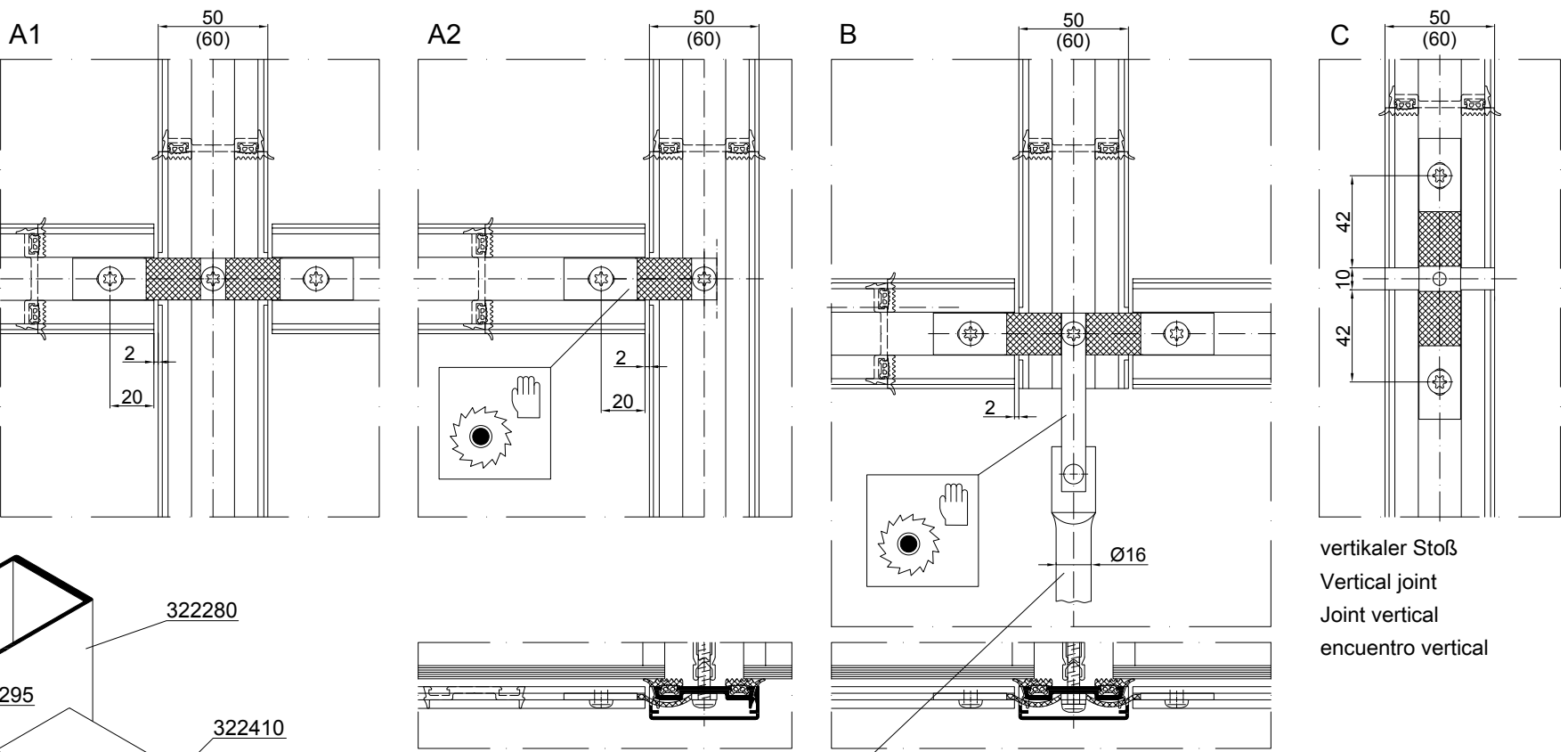
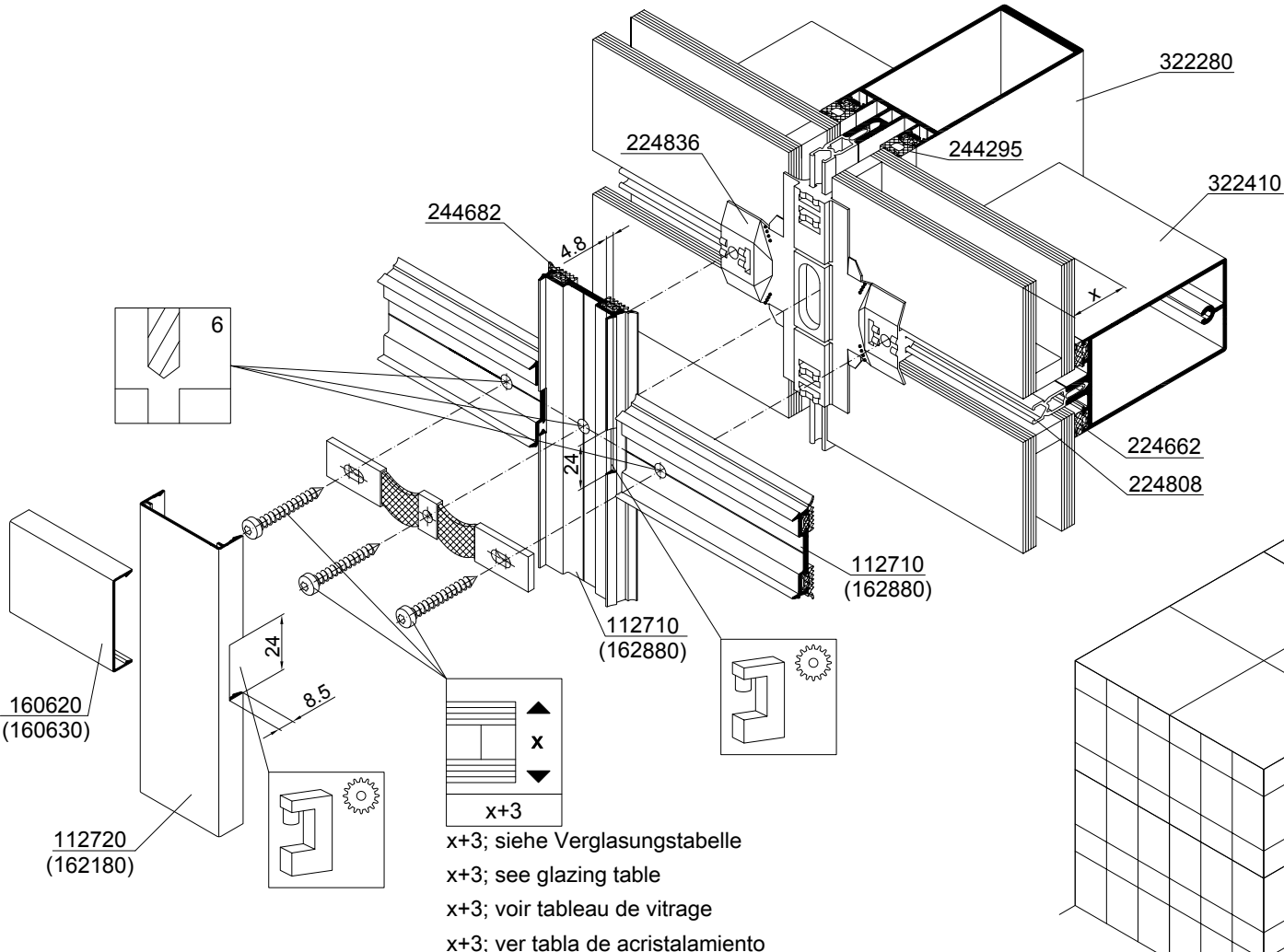


Bearbeitung Processing Usinage Mecanizado	Blitzschutzklemme Lightning protection clamp Shunt paratonnerre Terminal pararrayos	Art.-Nr.	Andruckprofil Pressure plate Serre-vitres Perfil presor	Art.-Nr.
		242670	FW 50+ 	112710
			FW 60+ 	162880
			FW 60+ 	162160
			FW 50+.HI 	325520
			FW 60+.HI 	325540

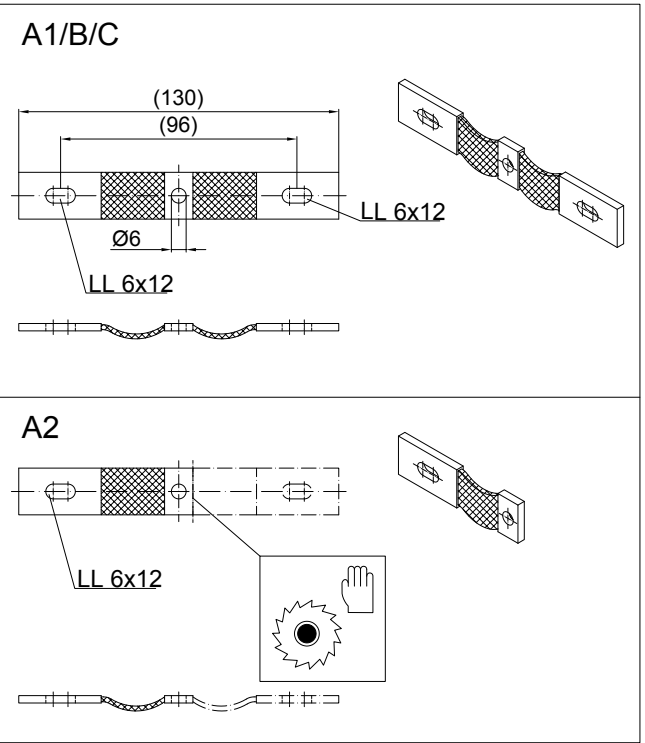


vertikaler Stoß  
Vertical joint  
Joint vertical  
encuentro vertical



Anbindung Erdführungsstange  
durch Blitzschutz-Fachbetrieb  
The earth rod must be connected by a  
lightning protection specialist  
Raccordement au piquet de terre  
par spécialiste paratonnerres  
Unión a la pica de tierra, por empresa  
especializada

Verfahren für die Auslegung  
von Fangeinrichtungen  
nach DIN V VDE V 0185-3  
Procedure for constructing supports in  
accordance with DIN V VDE V 0185-3  
Procédure de dimensionnement  
des dispositifs de capture  
selon DIN V VDE V 0185-3  
Método para realizar la instalación  
receptora según DIN V VDE V 0185-3



Art.Nr. in Klammern ( ) für FW 60+  
Art. No. in brackets ( ) for FW60+  
Art.-N° entre ( ) pour FW 60+  
Art.Nr. entre paréntesis ( ) para FW 60+

FW 50+ gezeichnet  
FW 60+ sinngemäß  
FW50+ shown Similar  
principle for FW60+  
FW 50+ (dessiné)  
FW 60+ (analogue)  
FW 50+ representado  
FW 60+ similar

Auslegung durch  
Blitzschutz-Fachbetrieb  
Must be installed by a lightning  
protection specialist  
Dimensionnement par un  
spécialiste paratonnerres  
Instalación realizada por  
empresa especializada

Blitzschutzklasse Lightning protection class Niveau de protection Clase de pararrayos	Maschenweite M Mesh size M Taille de mailles M Ancho de malla M
I	≤5x5m
II	≤10x10m
III	≤15x15m
IV	≤20x20m

Sicherheit FW 50 + - Blitzschutz FW50+ security - Lightning protection Sécurité FW 50 + - Protection contre la foudre Seguridad FW 50 + - Protección contra los rayos	K17319 15.08.2008
--	----------------------